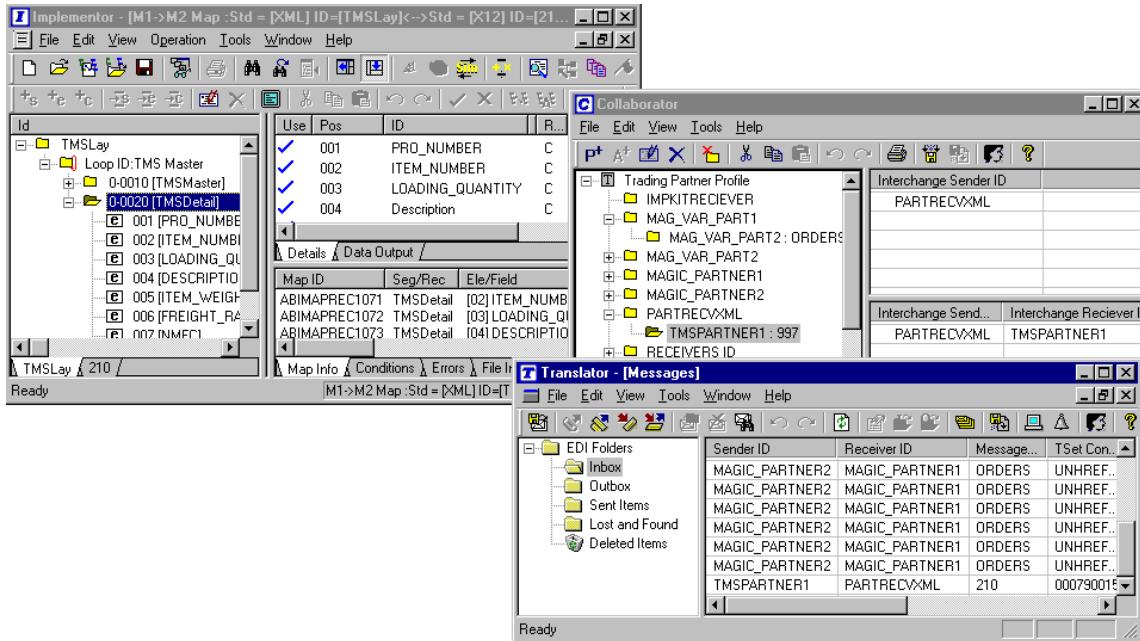




**EDISPHERE** is an innovative data integration tools for comprehensively meeting traditional EDI requirement as well as modern XML / JSON based SOAP / REST Web Services integration requirement.



## Key Benefits

EDISPHERE fulfills your EDI requirements:

- **Entirely:** Designed with a whole-product approach, it consists of both, Productivity tools (Implementor, Collaborator), and Translation tools (Translator), to robustly integrate on premise ERP systems and Cloud systems over Internet ([see white paper, EDISPHERE - Overview](#)).
- **Quickly:** It has a very intuitive user interface and a number of smart features that simplifies your complex mapping requirements and helps you beat your data integration implementation deadline ([see white paper, EDISPHERE - Mapping Simplified](#)).
- **Reliably:** It exhaustively validates your business messages for data integrity and assures you that your incoming and outgoing electronic data messages in X12, EDIFACT, Proprietary flat files, XML, JSON, etc. are absolutely error free ([see white paper, EDISPHERE – Data Reliability](#)).
- **Seamlessly:** It integrates with your business application over Internet using FTP, Web Services, and in many other ways, quietly processing transactions in the background. It helps you to design your application messages in a manner that assures your long-term IT goals without burdening you with issues of future modifications to the data formats of your existing and new trading partners ([see white paper, EDISPHERE – Application Integration](#)).
- **Cost effectively:** Our high-quality low-cost R&D enables us to offer the products and services at a lower cost, which in turn offers you the best return on your investment (ROI) at the lowest total cost of ownership (TCO).

## Key Benefits of EDISPHERE Suite - Translator, Implementor and Collaborator

**Any-to-Any conversion:** Translator supports conversion of messages between many different formats, such as, X12, EDIFACT, SAP IDOCs, Excel sheets, XML, JSON, Proprietary flat file formats, and also maps directly to Databases. User can design their business application messages keeping their **long-term IT goals** in mind without worrying about the issues of future modifications to the data formats of your existing and new trading partners.

**Data Integrity:** Both application and partner data messages are exhaustively checked for syntax integrity, implementation guide requirements such as the need for data balancing requirement, conditional or situational requirements, validation of data against external code sets, trading partner specific data validation requirements, etc. The user is assured that their incoming and outgoing business application and partner messages are free of error.

**Seamless 24x7 operations:** Translator integrates with your business application residing on any platform in a format most suited to your business application and exchanges messages using a number of options such as a common directory, a common database, or through APIs (SOPA / REST web-services). Its multithreading architecture facilitates high-performance 24x7 unattended operations, informing your system administrator with an email if there are any errors in translation.

**Easily create maps** - Implementor has a very intuitive user interface, where your maps can be created using “*drag and drop*”, “*point and click*” features. It has number of very innovative features, which greatly simplifies your complex mapping requirements while significantly reducing your mapping efforts. Implementor has excellent capabilities to map messages of dissimilar types and disparate hierarchies.

**Testing data integration interfaces:** The *Test Data Generator* feature generates data in all supported data formats, including generating data directly in your database. Random and user supplied data can be generated for any finitely permissible number of segments and loops. When used with the *Analyzer* feature, it helps to test your application-data integration interfaces and partner-data integration interfaces, in early stages of your data integration implementation.

**Debugging maps:** The *Simulator* feature provides excellent support for making your data integration system ready even before your evolving business application or your trading partner is ready to exchange messages and also for debugging your complex maps. Every segment in source and output being mapped is displayed with its complete hierarchal information along with the source data and the transformed mapped data. Errors, if any, are displayed. When used with the Implementor’s support for disabling maps temporarily so that partial maps are executed, it results in a very powerful debugging capability.

**Go live with your partner quickly:** Collaborator helps in creating trading partner agreement, which besides other information includes mapping, workflow and communication information, necessary for translating and exchanging messages with your trading partner. Further, the Implementation kit feature enables packaging your partner layouts, which when used by your partner along with Implementor-Analyzer (your proxy-translator) helps in eliminating data integration errors before testing your messages over Internet and VAN.

**Centrally manage your data integration implementation and partner relationships:** For multi-location companies deploying EDISPHERE for their various office locations, the “Implementation Kit” feature in Collaborator can be very effectively used for centrally managing your implementations and trading partner relationships. The entire implementation for various locations can be carried out at one central location and using the Implementation kit feature it can be deployed and upgraded on the production (live) servers.

**Facilitates quality support:** The “Implementation Kit” feature, not only assist in the remote deployment of your implementation, but the added ability to forward the Implementation kit to our technical support team helps us to reproduce your problem promptly (and locally), which in turn helps us in providing quality support.

Contact: EDISPHERE Software Private Limited  
215 Congress Nagar, Nagpur 440 012, India  
Tel: +91 712 246 3314 Fax: +91 712 664 6777 Email: [info@edisphere.com](mailto:info@edisphere.com)

**Disclaimer:** EDISPHERE Software makes no warranties, expressed or implied, in this summary. Readers are advised to use their judgment on accuracy of information by requesting evaluation copy of the product.